



## Installing the HPKV Key Valve into Your Urinal



### Diameter of Urinal Hole

*Diameter of 50mm +/-1.5 mm*

The ideal hole diameter to accommodate the Key-Adapter is 50mm.

### Drain Profile

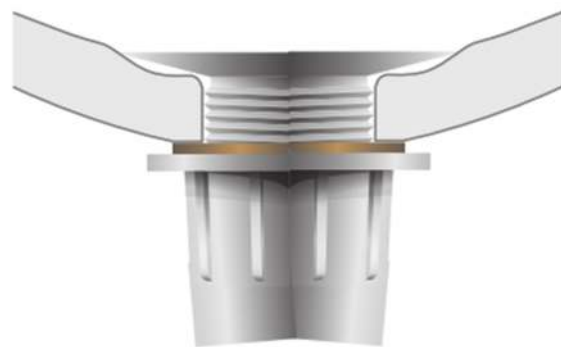
*A Continuous contour*

A curved drain surface prevents liquid residue from forming between the bowl drain and the Key-Adapter.

### Installation

*Installing the Key-Adapter Valve*

Our HPKV and Key-Adapter valve may require a rubber gasket to help ensure the urinal drain is sealed.



The Adapter-Key was designed to be tightened by hand without the help of other tools.

---

*There is no reason for any urinal to smell, regardless of whether it is a waterless one or a conventionally flushed urinal.*

---